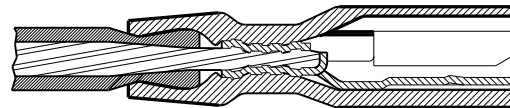
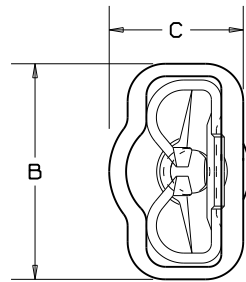
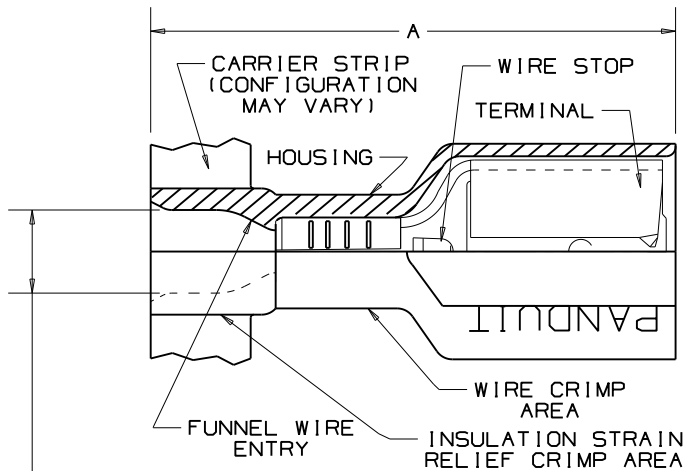


THIS COPY IS PROVIDED ON A RESTRICTED BASIS AND IS NOT TO BE USED IN ANY WAY DETRIMENTAL TO THE INTERESTS OF PANDUIT CORP.



SECTION VIEW OF CRIMPED DISCONNECT

- NOTES:
- UL LISTED & CSA CERTIFIED FOR:
    - A. 600V MAX VOLTAGE RATING
    - B. 221°F (105°C) MAX TEMP RATING
    - C. STRANDED AWG COPPER WIRE ONLY
  - PACKAGE QTY: 3K=3000 PIECES, 2K=2000 PIECES CONTINUOUS MOLDED STRIP CARRIER
  - MATERIAL:
    - A. STAMPING-CDA 260 BRASS, TIN PLATED
    - B. HOUSING-PREMIUM GRADE NYLON FOR SUPERIOR STRAIN RELIEF INSULATION CRIMPING
  - DIMENSIONS IN BRACKETS ARE IN mm OR mm<sup>2</sup>
  - NYLON HOUSING IS OPAQUE
  - DPF10-250F1B-2K IS UL APPROVED FOR USE WITH THE FOLLOWING WIRE COMBINATIONS: (2) #14, (2) #16, (2) #18 TWIST WIRES TOGETHER BEFORE CRIMPING

MAX. WIRE INSUL DIA. (SEE CHART)

TOOL CHART  
RECOMMENDED PRESSES  
CP-851, CP-860  
CP-861, CP-862

| PART NUMBER     | TAB SIZE                         | WIRE RANGE AWG (MM <sup>2</sup> ) | COLOR (note 5) | MAX. WIRE INSULATION DIAMETER | MIN. WIRE INSULATION DIAMETER | DIMENSIONS in. |              |              | STRIP LENGTH 1/32 (0.8) -0 | CA-800 & CA-9 APPLICATOR DIE INSERTS |
|-----------------|----------------------------------|-----------------------------------|----------------|-------------------------------|-------------------------------|----------------|--------------|--------------|----------------------------|--------------------------------------|
|                 |                                  |                                   |                |                               |                               | A ±.03 (1.8)   | B ±.01 (1.3) | C ±.01 (1.3) |                            |                                      |
| DPF18205F1BR-3K | .205/.187 x .032 (5.2/4.8 x 0.8) | 22-18 (1.5-1.0)                   | RED            | .106 (2.69)                   | .060 (1.52)                   | .78 (19.8)     | .31 (7.9)    | .22 (5.6)    | 9/32 (7.1)                 | CD-800-10 CD9-10A                    |
| DPF18206F1BR-3K | .205/.187 x .020 (5.2/4.8 x 0.5) | 22-18 (1.5-1.0)                   | RED            | .106 (2.69)                   | .060 (1.52)                   | .78 (19.8)     | .31 (7.9)    | .22 (5.6)    | "                          |                                      |
| DPF18250F1BR-3K | .250 x .032 (6.3 x 0.8)          | 22-18 (1.5-1.0)                   | RED            | .106 (2.69)                   | .060 (1.52)                   | .84 (21.3)     | .35 (8.9)    | .22 (5.6)    | "                          |                                      |
| DPF18-250F1B-3K | .250 x .032 (6.3 x 0.8)          | 22-18 (1.5-1.0)                   | RED            | .136 (3.45)                   | .060 (1.52)                   | .84 (21.3)     | .35 (8.9)    | .22 (5.6)    | "                          |                                      |
| DPF18-205F1B-3K | .205/.187 x .032 (5.2/4.8 x 0.8) | 22-18 (1.5-1.0)                   | RED            | .136 (3.45)                   | .060 (1.52)                   | .78 (19.8)     | .31 (7.9)    | .22 (5.6)    | "                          |                                      |
| DPF18-206F1B-3K | .205/.187 x .020 (5.2/4.8 x 0.5) | 22-18 (1.5-1.0)                   | RED            | .136 (3.45)                   | .060 (1.52)                   | .78 (19.8)     | .31 (7.9)    | .22 (5.6)    | "                          |                                      |
| DPF18-187F1B-3K | .187 x .032 (4.8 x 0.8)          | 22-18 (1.5-1.0)                   | RED            | .136 (3.45)                   | .060 (1.52)                   | .78 (19.8)     | .29 (7.4)    | .16 (4.1)    | "                          |                                      |
| DPF18-188F1B-3K | .187 x .020 (4.8 x .5)           | 22-18 (1.5-1.0)                   | RED            | .136 (3.45)                   | .060 (1.52)                   | .78 (19.8)     | .29 (7.4)    | .16 (4.1)    | "                          |                                      |
| DPF14-250F1B-3K | .250 x .032 (6.3 x 0.8)          | 16-14 (1.5-2.5)                   | BLUE           | .160 (4.06)                   | .090 (2.29)                   | .84 (21.3)     | .35 (8.9)    | .22 (5.6)    | "                          | CD-800-11 CD9-11A                    |
| DPF14-205F1B-3K | .205/.187 x .032 (5.2/4.8 x 0.8) | 16-14 (1.5-2.5)                   | BLUE           | .160 (4.06)                   | .090 (2.29)                   | .78 (19.8)     | .31 (7.9)    | .22 (5.6)    | "                          |                                      |
| DPF14-206F1B-3K | .205/.187 x .020 (5.2/4.8 x 0.5) | 16-14 (1.5-2.5)                   | BLUE           | .160 (4.06)                   | .090 (2.29)                   | .78 (19.8)     | .31 (7.9)    | .22 (5.6)    | "                          |                                      |
| DPF14-187F1B-3K | .187 x .032 (4.8 x 0.8)          | 16-14 (1.5-2.5)                   | BLUE           | .160 (4.06)                   | .090 (2.29)                   | .78 (19.8)     | .29 (7.4)    | .18 (4.6)    | "                          |                                      |
| DPF14-188F1B-3K | .187 x .020 (4.8 x .5)           | 16-14 (1.5-2.5)                   | BLUE           | .160 (4.06)                   | .090 (2.29)                   | .78 (19.8)     | .29 (7.4)    | .18 (4.6)    | "                          |                                      |
| DPF10-250F1B-2K | .250 x .032 (6.3 x 0.8)          | 12-10 (4.0-6.0)                   | YELLOW         | .220 (5.59)                   | .110 (2.79)                   | .96 (24.4)     | .35 (8.9)    | .23 (5.8)    | 3/8 (9.5)                  |                                      |

SA CERTIFIED LR31212 UL LISTED 20H3 E78522

Panduit part numbers shown on this drawing meet the material requirements of RoHS (EUROPEAN DIRECTIVES 2002/95/EC) as proposed by the Technical Adaptation Committee.

**PANDUIT**

CORP. TINLEY PARK, ILLINOIS

ADDED NOTE TO TWIST MULTIPLE WIRES TOGETHER PRIOR TO CRIMPING

Added Part numbers DPF18205F1BR-3K, DPF18206F1BR-3K, DPF18250F1BR-3K

REELSMART™ DISCOGRIP™  
FULLY INSULATED FEMALE DISCONNECTS  
.250 X .032, .205 X .032/.020, .187 X .032/.020

| REV | DATE | BY | CHK | DESCRIPTION | ECN# | CUST | PM | DRAWN BY | CHK'D | SCALE | DRAWING NO./CAD FILENAME |
|-----|------|----|-----|-------------|------|------|----|----------|-------|-------|--------------------------|
|     |      |    |     |             |      |      |    | KRC      | LA    | NONE  | A41409                   |